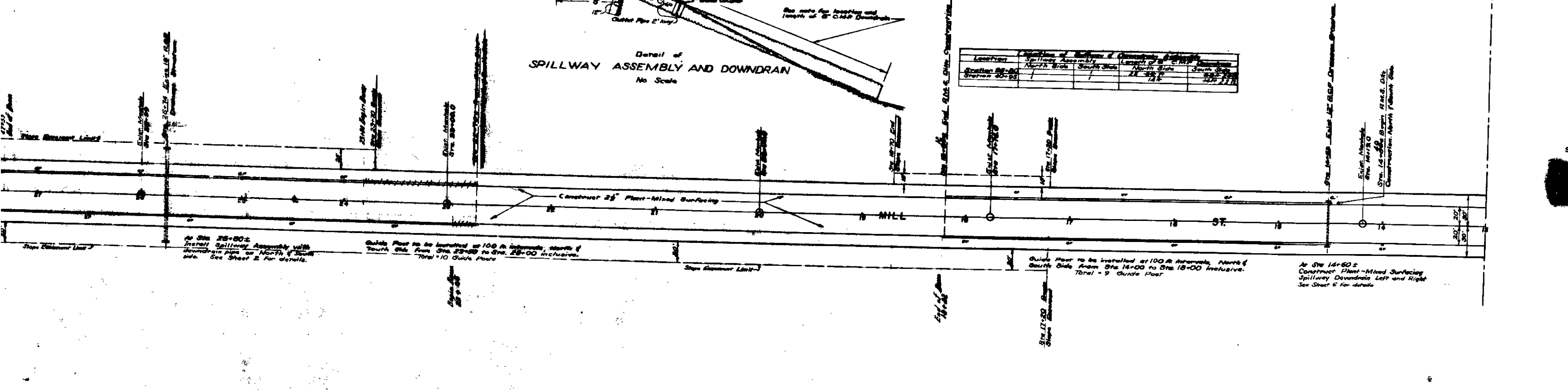


Location	Stationing of Spillway & Downdrain Assembly		Stationing of C.M.P. Downdrain	
	North Side	South Side	North Side	South Side
Station 28-00	1188.87	1188.87	1188.87	1188.87
Station 20-00	1152.00	1152.00	1152.00	1152.00

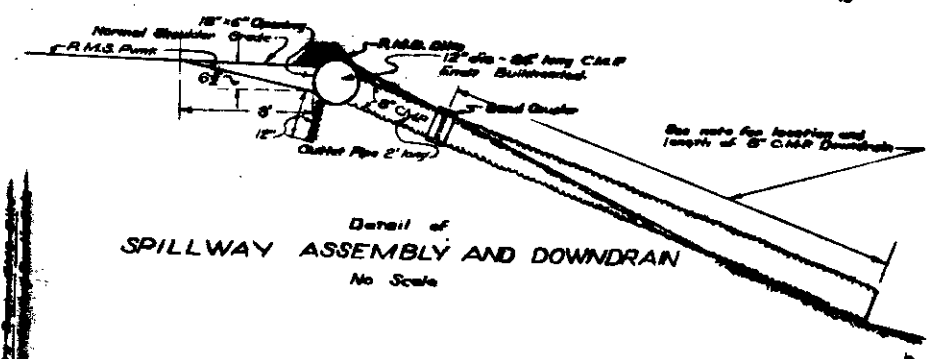
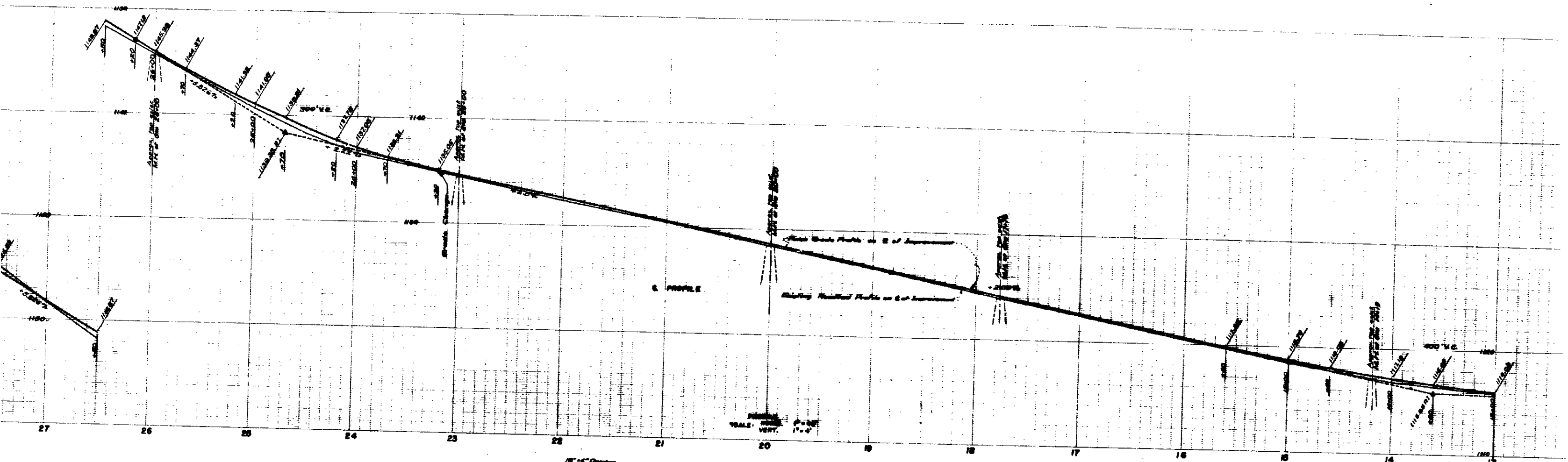


At Sta. 28-00 ±
Install Spillway Assembly with
downdrain pipe on North & South
side. See Sheet 5 for details.

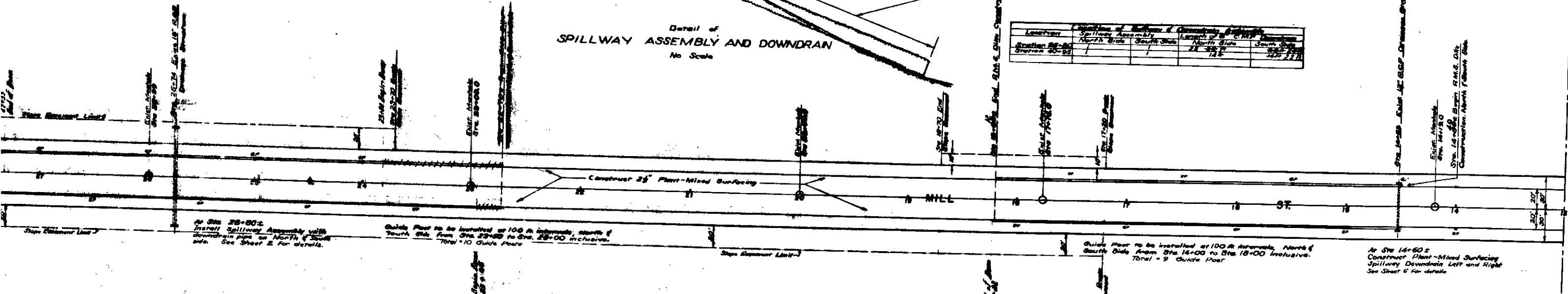
Guide Post to be installed at 100 ft intervals, south of
Spillway Crest, from Sta. 23+00 to Sta. 28+00 inclusive.
Total = 10 Guide Posts

Guide Post to be installed at 100 ft intervals, north of
Spillway Crest, from Sta. 16+00 to Sta. 18+00 inclusive.
Total = 9 Guide Posts

At Sta. 14-60 ±
Construct Plant-Mixed Surfacing
Spillway Downdrain Left and Right
See Sheet 6 for details.



Location	Stationing of Spillway Crest		Stationing of Downdrain	
	North Side	South Side	North Side	South Side
Station 28-00	1188.87	1188.87	1188.87	1188.87
Station 20-00	1182.00	1182.00	1182.00	1182.00



At Sta. 28-00±
Install Spillway Assembly with
downdrain pipe on North & South
side. See Sheet 5 for details.

Guide Post to be installed at 100 ft intervals, south of
Spillway Crest, from Sta. 23+00 to Sta. 28+00 inclusive.
Total = 10 Guide Posts

Guide Post to be installed at 100 ft intervals, north of
Spillway Crest, from Sta. 16+00 to Sta. 18+00 inclusive.
Total = 9 Guide Posts

At Sta. 14-60±
Construct Plant-Mixed Surfacing
Spillway Downdrain Left and Right
See Sheet 6 for details.